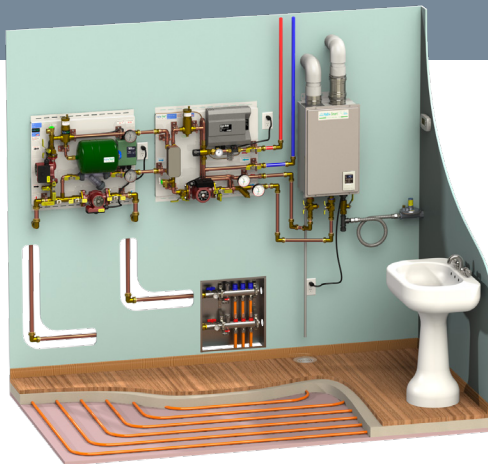




COMBI PANELS



Item Number(s) : CBLK-PE30MV-120HT/120DW
CBLK-PE40MV-180HT/199DW

Category : Combi Panel

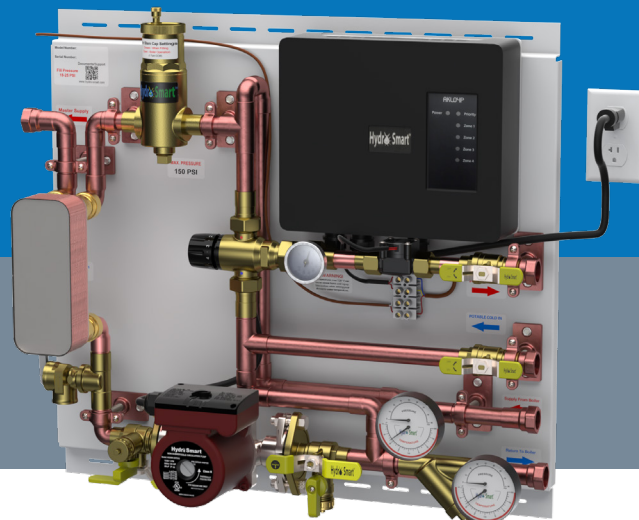
Environment : Indoor

Power Source : Electric

Warranty : 2 Year

FEATURES:

- Circulator Pump – Bronze 3 - Speed
- Pump Isolator Flanges With Drains
- Pump Controller
- Priority Potable water
- Prewired - Pump/Control
- Modular - Works with Hydro Pro Panel Systems
- Priority Flow Switch
- Powder Coated Steel Panel
- Mixing Valve with Gauge
- Press/Temp Gauges
- Expansion Tank
- Plate Exchanger – Potable/Space Heating Fluid Separation
- Y Strainer
- Air Separator
- Quick Mount Rails
- Precision solder Joints
- Clear Coated Copper
- Life Time Tech Support
- Saves 13 + hours of installation
- Pressure Tested
- Easy Access to all Components
- Power Cord – 10 Ft
- Type L Copper
- Pressure Relief Valve
- Scald Protection



Are you looking for a reliable and efficient way to heat your home and have hot water on demand? The Combi Pro Panel might be the perfect solution for you. This innovative panel integrates potable heater water and space heating (radiant) with one heat source, providing you with priority potable heated water without the need for a storage tank.

How does the Combi Pro Panel work?

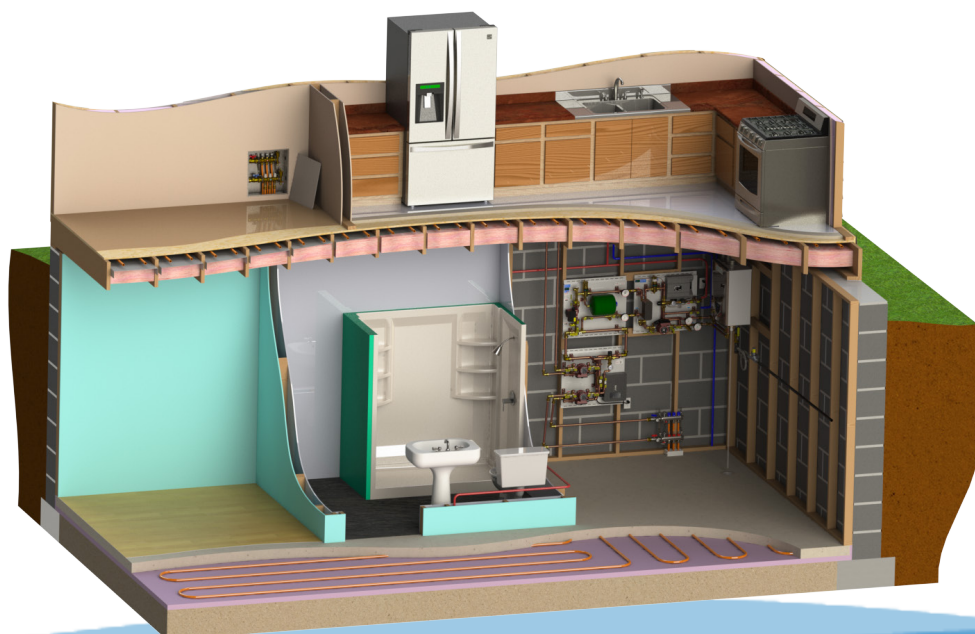
The Combi Pro Panel easily connects to Hydro Smart space heating panels for radiant heating, ensuring that your home stays warm and comfortable. It is important to note that this panel is designed to be used in conjunction with Hydro Smart radiant heating panels and is not meant to be used as a standalone product for domestic water.

Key features of the Combi Pro Panel

With the Combi Pro Panel, you can integrate it with a wide variety of boilers/water heaters, making it a versatile option for your heating needs. This panel delivers "priority" potable heated water with no storage tank, ensuring that you have hot water whenever you need it. Additionally, it seamlessly integrates with any Hydronic Modular Space Heating Panel system, providing you with a comprehensive heating solution for your home.

When the potable water is activated and flowing, the space heating panel system is temporarily halted to give the potable water priority and full power for household use. This ensures that you always have access to hot water when you need it, without compromising on the efficiency of your space heating system.

Overall, the Combi Pro Panel is a reliable and efficient solution for your heating and hot water needs. With its innovative design and seamless integration with other heating systems, it is a must-have for any homeowner looking for a convenient and effective heating solution.



COMBI PRO PANEL SPECIFICATIONS

	MODEL	
	CBLK-PE30MV-120HT/120DW	CBLK-PE40MV-180HT/199DW
Boiler S/R Connections	3/4" FPT	3/4" FPT
Potable C/H Connections	3/4" MPT	3/4" MPT
Space Heating S/R Connections	3/4" FPT	1" FPT
WT (LBS)	62	65
Panel Size	26"WD x 24"HT x 11"DP	34.5"WD x 24"HT x 11"DP
Space Heating Circulator	CP3S26-110BFC	CP3S26-110BFC
Panel Clearances	1" Left, 1" Right, 1" Top, 1" Bottom	1" Left, 1" Right, 1" Top, 1" Bottom
Power Supply	120Vac, 6Amps	120Vac, 6Amps
Max Temperature	Varies - Boiler Spec	Varies - Boiler Spec
Max. Operating Pressure	150 PSI	150 PSI
Max. Tested Pressure	200 PSI	200 PSI
Panel Material	Steel Powder Coated - Black	Steel Powder Coated - Black
Pressure Relief Valve	150 PSI	150 PSI
Potable Min-Max Flow Rate	.50 - 8 GPM	.5 - 11 GPM
Space Heating Min-Max Flow Rate	.50 - 8 GPM	.5 - 11 GPM
Space/Potable Heating BTU Max	120,000/120,000	180,000/180,000
Plate Exchanger	30 Plate	40 Plate

COMPATIBLE BOILERS

When sizing your heater, select your emitter type first to ensure the boiler can handle the water delivery temperature then choose size of heater based on space heating or potable (Shower Head) capacity. Choose the larger of the two. Boiler specs are approximate. For more exact specs see the boiler brochures and manual. BTU heat-loss is recommended for boiler sizing for space heating. Shower head capacity is based on 40 Degree F incoming water. Choose your combi panel based on space heating BTU requirements.

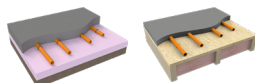


HS115Plus

Shower Capacity: 1 1/2 Heads @ 1.8 GPM
Boiler Output Range BTU's: 16,000 - 116,200
Space Heating Capacity BTU's: 16,000 - 116,200
Max Temp: 140° F
Compatible Emitters: Tubing in Concrete



4" CAT III
STAINLESS STEEL
VENTING NEEDED

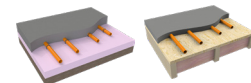


HS120Con-NG/LP

Shower Capacity: 1 1/2 Heads @ 1.8 GPM
Boiler Output Range BTU's: 13,900 - 111,600
Space Heating Capacity (Sq Ft Min/Max): 13,900 - 111,600
Max Temp: 140° F
Compatible Emitters: Tubing in Concrete



3" SCHEDULE 40 PVC
VENTING NEEDED

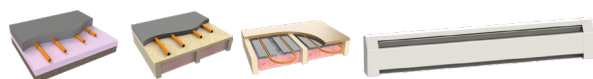


HS199Con-NG/LP

Shower Capacity: 3 Heads @ 1.8 GPM
Boiler Output Range: BTU's: 12,300 - 189,000
Space Heating Capacity BTU's: 12,300 - 189,000
Max Temp: 185° F
Compatible Emitters: Tubing in Concrete, Staple Up, Baseboard



3" OR 4" SCHEDULE
40 PVC VENTING
NEEDED



SH29 - Hydro Shark

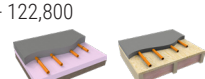
Shower Capacity: 2 Heads @ 1.8 GPM
Boiler Output Range KW/BTU's: 2.34 - 29KW / 8,000 - 99,000 BTU's
Space Heating Capacity KW/BTU's: 8,000 - 99,000
Max Temp: 140° F
Compatible Emitters: Tubing in Concrete



NO VENTING
REQUIRED

SH36 - Hydro Shark

Shower Capacity: 2.5 Heads @ 1.8 GPM
Boiler Output Range KW/BTU's: 2.34 - 36KW / 8,000 - 122,800 BTU's
Space Heating Capacity KW/BTU's: 8,000 - 122,800
Max Temp: 140° F
Compatible Emitters: Tubing in Concrete



Micro-Boilers & Hydro Smart Integrator Panels, thermostats, manifolds, venting and accessories are all sold separately. Guide is based on insulating to a R19 in walls, R38 in ceilings, maximum 12 ft. sidewalls, with 2" of extruded styrene insulation around perimeter & under slab emitter and/or 3-1/2" of fiberglass insulation for staple up emitter. For more accurate sizing, a BTU heat loss of the heated space should be considered. **ALWAYS CHECK WITH & FOLLOW LOCAL CODES**